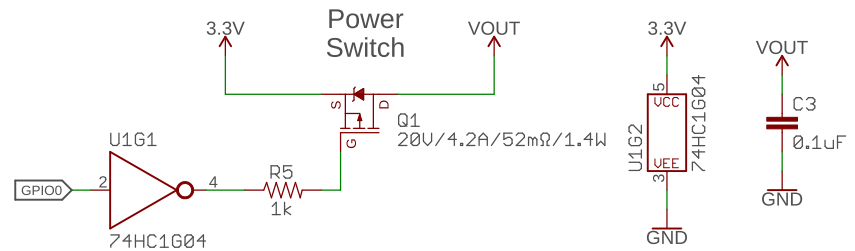
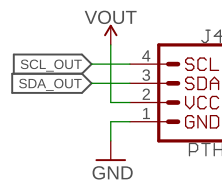
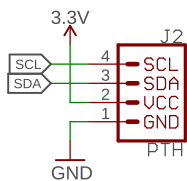
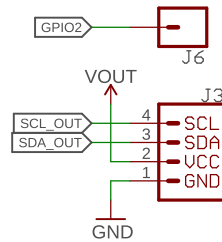
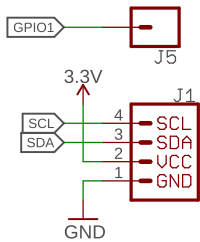
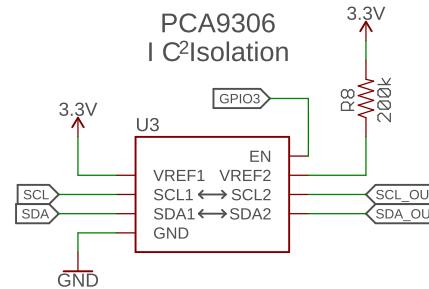
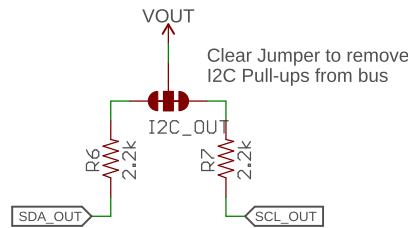
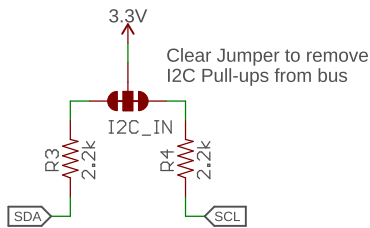


At power on, the PCA9536 pins are inputs with weak (100K) pullup.

7-bit Unshifted I2C Address: 0x41



Released under the Creative Commons Attribution Share-Alike 4.0 License  
<https://creativecommons.org/licenses/by-sa/4.0/>



TITLE: Qwiic Power Switch

Design by: Paul Clark

REV: v10

Date: 10/2/2024 11:12 PM

Sheet: 1/1