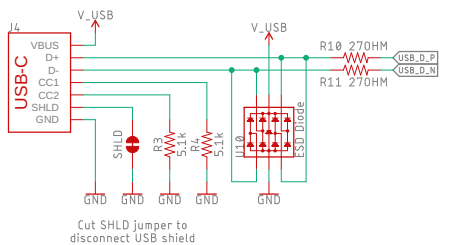
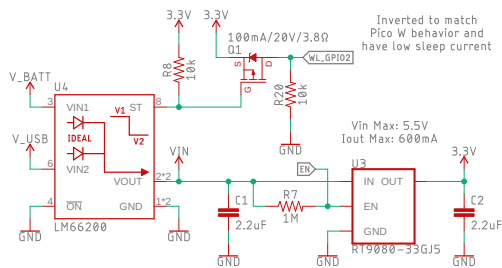


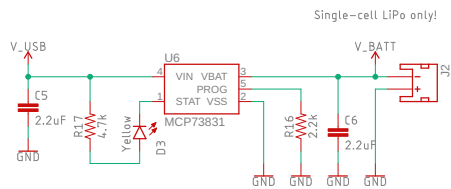
USB-C Connector



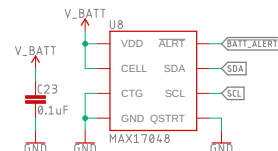
Power Input and Voltage Regulator



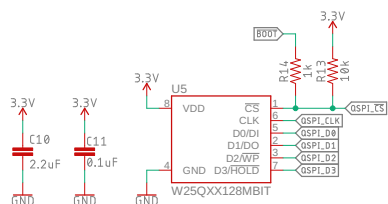
Battery Charger



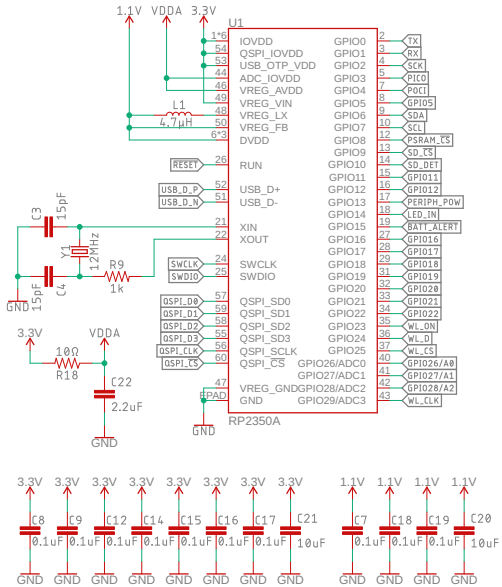
Battery Fuel Gauge



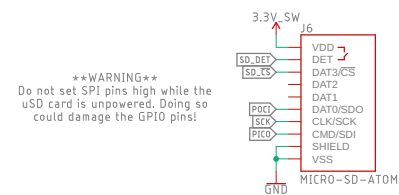
16MB Flash



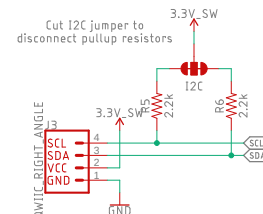
Raspberry Pi RP2350



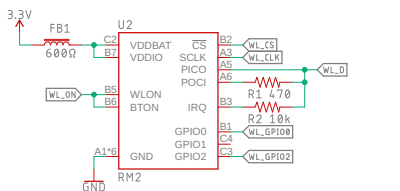
uSD Card Socket



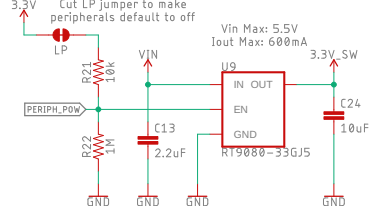
Qwiic Connector



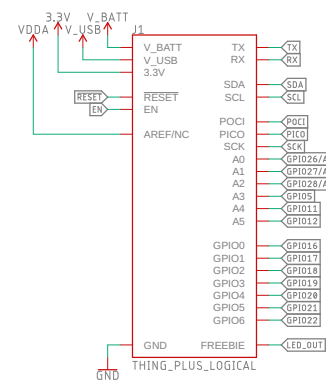
Raspberry Pi RM2 Radio Module



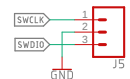
Peripheral Power Control



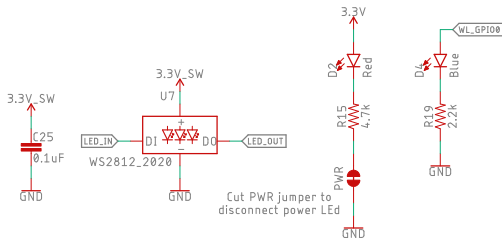
Thing Plus Pinout



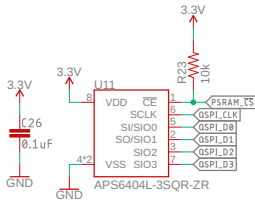
Debug Header



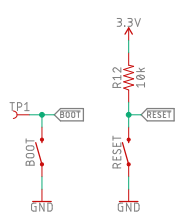
LEDs



8MB PSRAM



Buttons



Released under the Creative Commons Attribution Share-Alike 4.0 License
<https://creativecommons.org/licenses/by-sa/4.0/>
 TITLE: SparkFun_Thing_Plus_RP2350
 Design by: Dryw Wade
 Based on design by: Nathan Seidt
 Date: 6/24/2024 11:07 AM
 REV: v1.0
 Sheet: 1/1